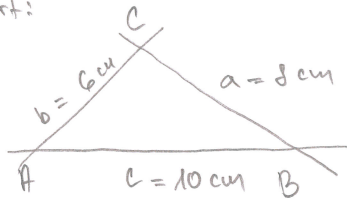


Dobrovolné díklaty 2.

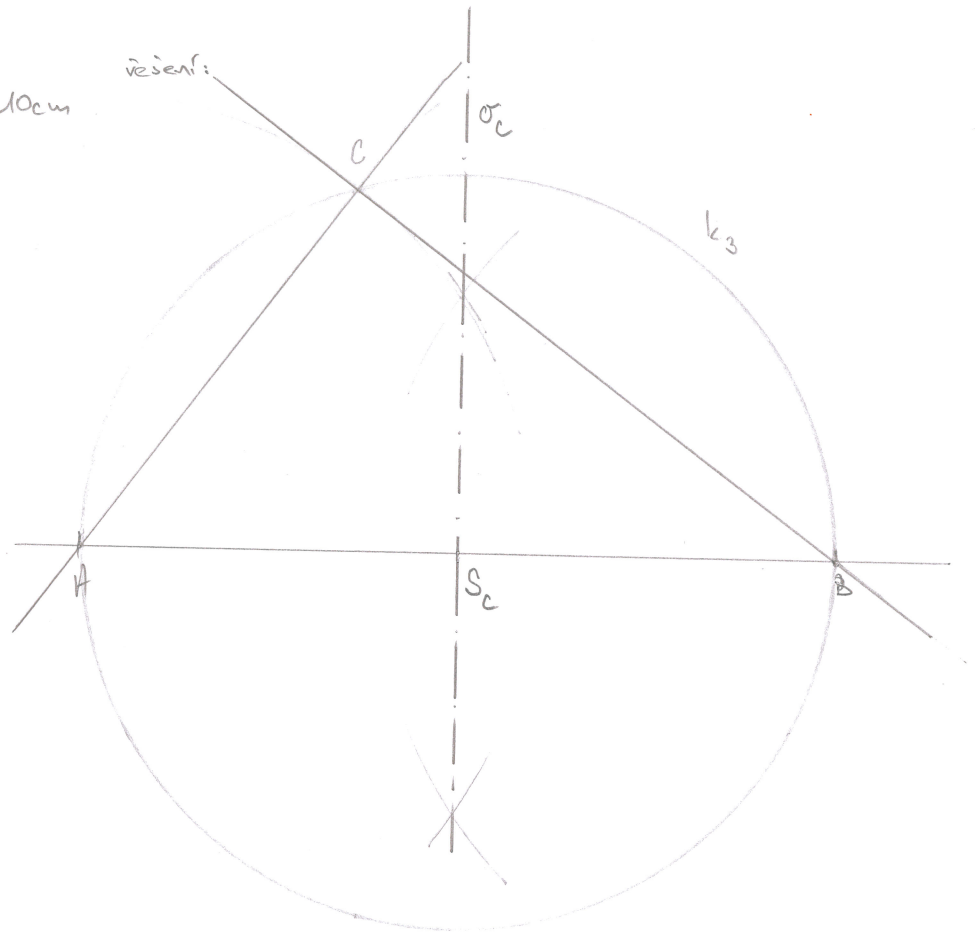
1,

1. $\triangle ABC$; $a = 8\text{cm}$; $b = 6\text{cm}$; $c = 10\text{cm}$
2. σ_c
3. S_c
4. k_3 ; $k_3 (S_c; |S_c B|)$

Náčrt:

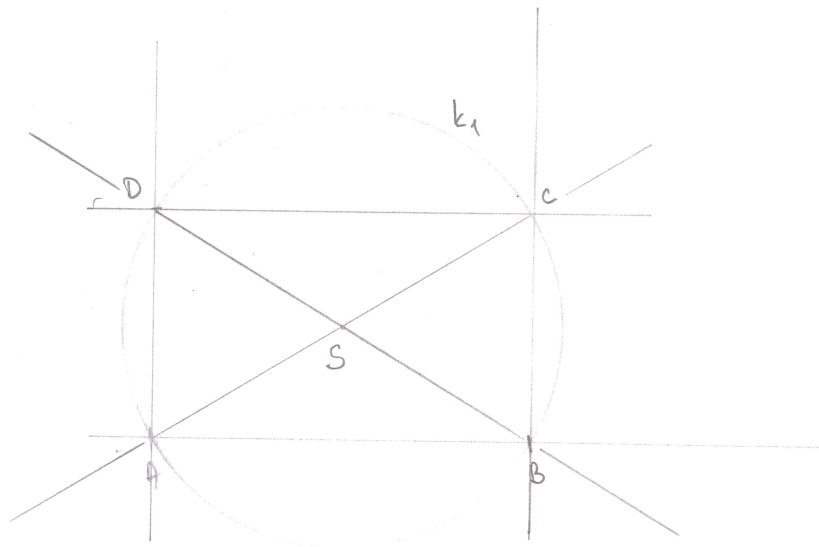


řešení:



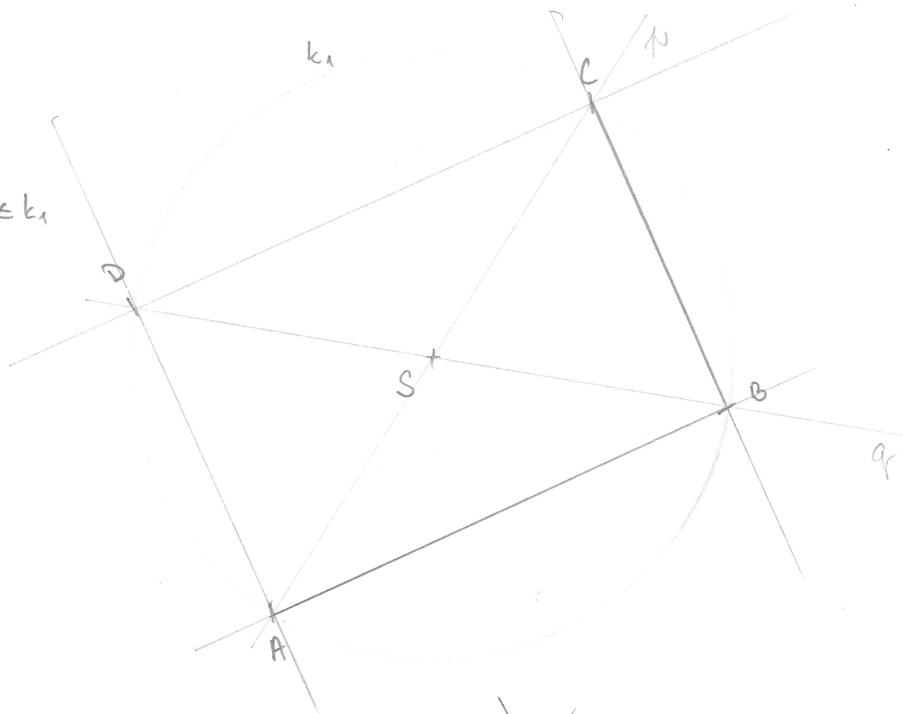
2,

1. obdelnik ABCD; $a = 5\text{cm}$; $b = 3\text{cm}$ řešení:
2. AC
3. BD
4. S ; $S = AC \cap BD$
5. k_1 ; $(S; |AS|)$



3

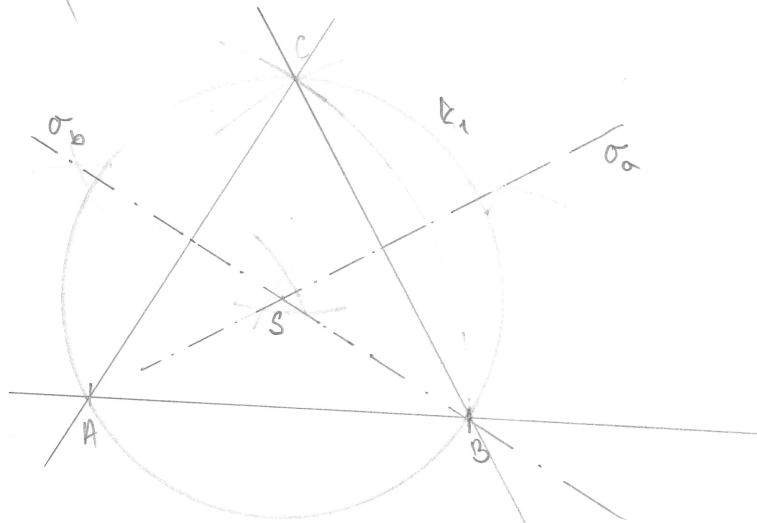
1. S
2. $k_1; k_1(S; 4\text{cm})$
3. $p; S \in p$
4. $q; S \in q; p \neq q$
5. obdelník $ABCD; A, B, C, D \in k_1$
 $A, C \in p; B, D \in q$



4,

1. Rovnostranný $\Delta ABC; a = 5\text{cm}$
2. σ_a
3. σ_b
4. $S = \sigma_a \cap \sigma_b$
5. $k_1; k_1(S; |SB|)$

řešení:



- 5) 1. čtverec $ABCD; a = 6\text{cm}$
2. σ_{AB}
3. AC
4. $S; S = \sigma_{AB} \cap AC$
5. $X; X = \sigma_{AB} \cap AB$
6. $k_1; k_1(S; |SX|)$
7. $k_2; k_2(S; |SA|)$

řešení:

